

王跃生

内容提要

关键词

“ ”

## 一、个体家庭承载体的理论认识及相关研究说明

9

D

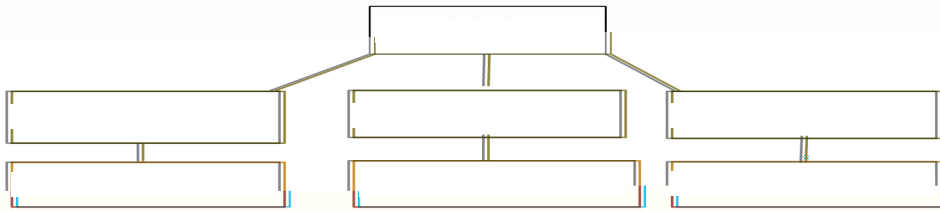


图1 家庭载体结构类型

”

”

”

”

”

”

”

”

[1]

---

[1]  
1999 5

1994

1991 1

2006 11

[1]

1956

1982

[2]

## 二、传统社会个体家庭载体及特征

[3]

“

” [4]

”

” [5]

1.

[1]

2010

2

[2]

2012 1

—

—

2008 3

/

2016 6

[3]

[4]

8

[5]

2013 48

.....

[1]

2

1

“ ” “ ” “ ” “ ”

[2] “ ”

[3]

[4]

[5]

2

“

” [6]

[7]

[8]

[9] “ ”

3

[1]

66 13

[2]

[1]

[2]

“

” [3]

4

[4]

[5]

1.

[6]

.....

[1]

[2] " "

[3]

[4] " "

" "

" "

[5]

[6]

"

2

1

——

"

" [7]

" "

" [8]

[9]

"

.....

" [10]

2

—— " " " "

" " " " "

[11] " "

[1]	28	5	1965	3625
[2]	48		1975	2089
[3]		2		
[4]	120		1976	3481
[5]		2		
[6]				
[7]	24		1973	684
[8]	51		1975	1344
[9]	96		1976	2467
[10]	79		1974	1926
[11]		3		

981

“ ” “ ” [1]

[2]

[3] “ ”

“ ” [4]

[5]

### 三、新中国成立至20世纪80年代初新公共组织对个体家庭的承载功能

1950

---

[1][3]		1999	816
759			
[2]	2		
[4]			
1991	16		
[5]	11		



1956

1958

①

4

—

1954

[1]

20 80

“ ”

50 90

[2]

---

[1][2]

1954 12 31

<http://www.zvbk.org/MyLemmaShow.aspx?lid=210286> 2018 12 1

#### 四、当代社会变革之下个体家庭承载体的强弱变化



2

20 90

—

90

“ ”

## 五、个体家庭承载体出现的新问题及解决之道

1.

1

2

" "

"

"

" "

2

6



“ ”  
3

“ ”  
“ ”

“

## 六、总结与讨论

“ ” “ ” “ ”

“ ” “ ”  
1949 20 50 80

20 90

[责任编辑:方心清]