
家庭流动与居留意愿： 基于江苏省 2018 年流动人口动态监测调查

2018

logit

logit

5-9

10

214122

214122

2016

60%^[1]

JUSRP11979

[1]

2016

7-8

2019/3 103

[1]

[2]

[3]

[4]

1

[2]

[3]

[4]

2

2

[5]

[6]

[7]

3

3

[1]

2010 8

2016 4

[2][4]

2016[3]

203

1. 2018 4 1 15 PPS 2018 5 1 PPS PPS 8000 6843 2 0-4 5-9 10 [1] [2] [3] 1

[1] 0-4 5-9 10

0

[2]

10

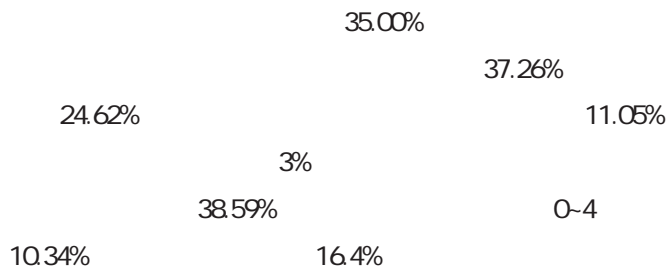
[3]

1		N=6843		/
控制变量	1	=1	0	2.18%
		=1	0	34.22%
	0-4	=1	0	19.27%
	5-9	=1	0	9.44%
	10	=1	0	10.76%
		=1	0	24.13%
	2	=1	0	0.2413
		=1	0	12.62%
		=1	0	12.94%
		=1	0	74.44%
	=1	=0	0.4160	
	2018		36.1157	
	-	=1 - =0	0.1418	
	2018		6.1153	
	=1	0	57.45%	
	=1	0	22.75%	
	=1	0	19.80%	
	=0	=1	0.6823	
	=0	=1	0.2593	
	=1	0	12.54%	
	=1	0	15.79%	
	=1	0	25.41%	
	=1	0	46.26%	
			8.3280	

1.

2		%				
		0-4	5-9	10		
	2.39	35.00	17.99	8.92	10.67	25.03
	3.59	38.55	38.59	5.45	2.78	11.05
	2.27	33.57	10.34	5.89	10.67	37.26
	2.22	34.75	16.40	10.10	11.90	24.62

2



2

Logistic

1

2—4

4 5 1 4 5

270 $e^{0.99}$

30 $e^{1.09}$
43.78% $e^{0.88}$

1-4
11.61 $e^{2.45}$ 5.03 $e^{1.61}$ 3

1-5

4

logit

0.3087*** 1.3616
-0.0155** 0.9846
0.3714** 1.4498

Logistic

0.7606*** 2.1395
1.6683*** 5.3029
~~0.5900***~~
0.0942***

4

~~0.2711~~

1-5

~~0.4895~~

~~0.0219~~

0.219

~~0.3970**~~

**

~~0.1802**~~

1.6691***
1.1819***
-4.2546***

R

1.36

1

1.54%

1.14 4.30

1.45

55.43%

9.87%

1

67.23%

5.31

3.26

3

